

The SKYHOOK

HOLIDAY CITY AMATEUR RADIO CLUB



www.hcarc.us

DECEMBER 2013

Toms River, NJ

Our December Meeting Starts at 6:30pm



December is a time for fellowship, so our December 5th meeting will be our annual Holiday Party. Bring your XYL and/or a friend. But remember **we'll start at 6:30pm** instead of the usual 7:00pm.

Birthdays & Anniversaries

Happy birthday to:

Leonard Bicher N2LFT

Helen Picciuti

Joyce Smith



Happy anniversary to:

Sandy & Dave Ottenberg

Helen & Ed Picciuti



For Your Calendar

Dec 5 at 6:30pm HCARC Holiday Party (see above).

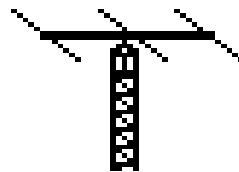
Dec 7 Remember Pearl Harbor.

Dec 9 at Noon is the noon get-together at Holiday City Diner.

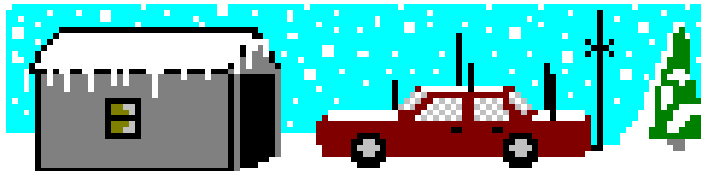
Dec 11 at 7:00pm License Exams by our VE team.

Dec 23 at Noon is another get-together at Holiday City Diner.

Dec 25 Happy Christmas to all



Heading South for the Winter?



If you're going away, we wish you an enjoyable, safe trip. But our club counts on its members for financial support, and dues are due January 1, so let's not worry our friendly treasurer, [Larry Puccio](#) (732-349-2950).

NEXT MEETING:
Thursday Dec 5 at 6:30 PM
Bldg A, Meeting Rm. #1
Holiday City South Clubhouse
Santiago Drive at Mule Road
Toms River, NJ

Dear Elmer,



*Are tubes really better than
semiconductors?*

Dear Friend,

Tubes do have some advantages over transistors and IC's. They are less likely to be destroyed by brief overvoltages or overloads, are easily replaced, and the associated circuits are usually easier to repair.

On the other hand, semiconductors (transistors and IC's) are much more efficient, much more compact, lighter in weight, can withstand a lot more vibration, do not require high voltages, don't need heater power, their lower operating temperature doesn't deteriorate nearby components, have a longer operating life, are not microphonic, and usually have a lower initial cost.

Not only that, but the lower internal temperature generates less background noise, and small size means less infrasonic thermal noise which, in oscillators, means a steadier frequency.

Some guitar players like the harmonic distortion they get when they overdrive tubes. You can get the same effect from a pair of semiconductor diodes at a much lower power level and amplify it, if that's really what you want. But that's for a single guitar tone. In radio, and all other audio, the less distortion, the better.

Elmer

Remember Pearl Harbor

The US had been trying to avoid getting really involved in the war in Europe, declaring neutrality Sept 5, 1939. However, by June 3, 1940, it became obvious that we needed to do something, so in September we sent England 50 destroyers and initiated our first ever peacetime military draft. On December 7, 1941, Japan launched an unprovoked air attack on Pearl Harbor, where most of our Pacific fleet was crammed into the harbor. Nineteen ships were sunk or damaged, and 2300 men died. Four days later, Germany and Italy declared war on the US. Most of us don't remember that Sunday morning, but many of us remember the war, or at least its effects, all too well.

Murray, KD2IN, found these photos at website of DavidPC.



HCARC Official Badge Ordering



Example

The club's official badge maker is the Capital Engraving Co. in Longview, WA. To order a badge, simply call Capital at 1-800-628-4985 after 1PM M-F. All that is required is to give your call and first name and your mail address. Use your credit card to pay. Cost is \$12.50 plus \$2 S&H. Al Ross WA7UQE will take care of you and put the official logo and club name on your personal badge.



UNCLASSIFIED

Ed Picciuti W1EAP is still offering his fine Ameritron AL-611 linear amplifier for sale. It's good for 600 watts PEP for SSB, 500 watts CW, or 400 watts RTTY. Call Ed at 732-349-0955 or email him at epicciuti@hotmail.com.

Our November VE Team Report

On November 13, three members of our VE team, namely Larry Puccio, Murray Goldberg, and John Roberts, gave exams to one candidate. He passed his Technician test, and so is now licensed.

Our VE team administers tests for all classes of amateur radio licenses. Test sessions are held at 7pm on the second Wednesday of each month. Although walk-ins are always welcome, we suggest calling Larry Puccio at 732-349-2950 for information.

Internet and e-Mail Address Links

Internet addresses and most call signs in The SKYHOOK are now hyperlinks to web sites or email addresses. If clicking on the link does not bring up what you want, copy the address and paste it into your search box.

Our VE Crew

Murray [KD2IN](#), John [K2JWH](#), Ed [W1EAP](#), Larry [K2QDY](#), John [KQ4WR](#), Stan [KB2PD](#), Steve [N2WLH](#), Kevin [W2FA](#), Walter [KC2LFD](#), Paul [N2QXB](#), Larry [WA2VLR](#).

License exams are given on the second Wednesday of each month at Holiday City South Clubhouse, Bldg A, which is at the corner of Mule Rd. and Santiago Dr.

Directions: From either Route 37 W or Davenport Road, take Mule Road to Santiago Drive. Turn into the parking lot from Santiago Drive, and park near the pool. Enter the building nearest the intersection.

CLUB COMMITTEES

Refreshments: Ed Baranowski

Webmaster: Steve [N2WLH](#), Carl [W2PTZ](#)

Publicity: Ed [W1EAP](#)

Programs: Lawrence [WA2VLR](#)

Sunshine: Dave [WA2DJN](#)

Field Day: Larry [K2QDY](#)

VE Sessions: Larry [K2QDY](#) 732-349-2950 & the crew

Skyhook: John Roberts [KQ4WR](#) 732-350-1162

Fund Raising: vacant

Membership: Doug Poray [KC2TZC](#)

HOLIDAY CITY AMATEUR RADIO CLUB

Toms River, New Jersey

Web Site www.hcarc.us

President	Carl Lee	W2PTZ	732 237-2421
Vice President	John Roberts	KQ4WR	732-350-1162
Secretary	Ed Picciuti	W1EAP	732 736-0955
Treasurer	Larry Puccio	K2QDY	732 349-2950
Executive Board	Larry Loscalzo	WA2VLR	732 431-9082
Executive Board	Tom Chicino	KC2RSE	732 240-7395
W2HC Trustee	Don Smith	W2III	732 505-4821

Membership is open to all interested persons. Ham license is not required. Dues are \$20.00 per year, payable Jan 1st. Members joining during the year will have the dues prorated. Family membership \$30.00 per family.

Meetings are held on the first Thursday of every month, at 7:00 pm.

Location: Meeting Room #1 in the Holiday City South Clubhouse.

Directions: From either Route 37 W or Davenport Road, take Mule Road to Santiago Drive. Turn into the parking lot from Santiago Drive and park near the pool. Enter the building nearest the intersection.

The SKYHOOK is published monthly.

Editor and Publisher:

John Roberts [KQ4WR](#) phone: 732 350-1162 E-mail KQ4WR@arri.net

Send all newsletter items to: John Roberts

7 Lincoln Ct. Whiting, NJ 08759-1505, or e-mail KQ4WR@arri.net



How's DX?

Warren Keay, KC2SSQ worked:

Call	Date	Time	Mode	Band	Entity	Grid
5Q4B			SSB	10m	Denmark	JO65bl
8R1AK			SSB	10m	Guyana	GJ06wt
9A288DX			SSB	10m	Croatia	JN65bs
CT1AVR			SSB	10m	Portugal	IN60te
DL7VK			SSB	10m	Germany	JO62pp
DL90HA			SSB	10m	Germany	JO40fn
EM11RJ			SSB	10m	Spain	IN82tk
F5PHY			SSB	10m	France	JN04mw
G4FRD			SSB	10m	England	IO65ga
HA3NU			SSB	10m	Hungary	JN96ii
IW2HAJ			SSB	10m	Italy	JN45no
IZ1GRH			SSB	10m	Italy	JN45ik
IZ1PM			SSB	10m	Italy	JN44is
OE9MON			SSB	10m	Austria	JN47vm
OK2OV			SSB	10m	Czech Rep	JN55fu
ON8IM			SSB	10m	Belgium	JO20ls
UT2PX			SSB	10m	Ukraine	KN59rb

Russ Young, A2VQV worked:

Call	Date	Time	Mode	Band	Entity	Grid
5J0R	11-01		RTTY	20m	San Andres Is	EK92dm
A73A	10-26		SSB	20m	Qatar	LL55qj
D44AC	10-23		SSB	20m	Cape Verde	HK76mv
D44TXT	10-20		RTTY	12m	Cape Verde	HK84fw
D44TXT	10-24		RTTY	17m	Cape Verde	HK84fw
DF1S	10-31		RTTY	15m	Germany	JO62
J87GU	11-12		RTTY	12m	NA-025 Union I	FK93je
JW9JKA	11-10		SSB	17m	EU-027 Bear I	JQ78wo
OD5NJ	10-24		CW	12m	Lebanon	KM73tw
OX3XR	10-21		CW	12m	Greenland	GP44de
SU9VB	11-01		RTTY	12m	Egypt	KM50ix
SV5DKL	10-18		RTTY	10m	Dodecanese	KM46ck
TN2MS	10-16		CW	12m	Rep: Congo	JI55xb
TN2MS	10-19		SSB	15m	Rep: Congo	JI55xb
TN2MS	10-20		CW	20m	Rep: Congo	JI55xb
UR4MKY	10-22		SSB	10m	Ukraine	KN98jl

Joe Militano, KC2QLA worked:

Call	Date	Time	Mode	Band	Entity	Grid
5J0R	11-08		SSB	15m	San Andres I	EK92dm
8R1Z	11-03		SSB	15m	Guyana	GJ06wt
CU3AK	10-31		SSB	12m	Azores	HM68lr
EA3JE	11-14		SSB	40m	Spain	JN11an
EI8BLB	11-08		SSB	20m	Ireland	IO62lj
I5ZSS	10-26		SSB	12m	Italy	JN53ku
PU5DUD	11-03		SSB	10m	Brazil	GG53lb
VA5DX	11-06		SSB	12m	Canada	DO62ta
VA7JA	10-31		SSB	12m	St Kitts & Nevis	FK97ph
VP9/AG2AA	11-03		SSB	20m	Bermuda	FM72pi
ZD8JR	10-31		SSB	12m	Ascension I	II22tb

LOGBOOK OF THE WORLD

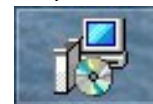
In response to many complaints, the ARRL has been making improvements to LoTW. It may never replace QSL cards, but it's catching on because it's free, and quite easy once you're enrolled. There's no cards to buy, no postage stamps, IRC's, or "green stamps." Here's how to access it.

First, be sure your FCC license has your current mailing address. If you need to change it, see a member of our VE crew.

Second, determine your station's DXCC entity, ITU zone, CQ zone, and Grid Square. All US Atlantic coast states are in ITU zone 8, CQ zone 5. All of Berkeley Twp, NJ is in grid FM29 (a 6-character grid square is preferred but not required), and our DXCC entity is "United States of America". If your QTH is a NJ barrier island, you can add IOTA NA-111 to your list.

To set up your "account", you first need to apply for a digital signature called a "Callsign Certificate", for signing your logs.

Go to "www.arrl.org/instructions" and open the appropriate "Download TQSL Software for ..." downloader. This is a big file, so if the ARRL's computer is very busy, downloading TQSL and its installer could take several minutes. Decide what folder you want to put it in, and make a note of it. When the installer icon appears, click it and install TQSL.



Then look for the TQSL icon (colors may not match these pictures).

Click it to open the TQSL program. You will get an alert that says you have no Callsign Certificate, so click "Yes" to "Request a new Callsign Certificate".



[Continued on next page]

[Continuation of Logbook of The World]

Enter your current callsign, your DXCC entity ("UNITED STATES OF AMERICA"), and the date you began using that callsign. Leave the "QSO end date" blank. You can add your other station locations and/or callsigns later.

Enter your name and address. (This must exactly match your FCC data base license address, so copy it from your license. You will get a post card addressed to that address, with an 8-character password on the address side, and instructions on the other side.)

Next, enter your e-mail address. Be sure it's correct, as you will be getting your Callsign Certificate file and your LoTW password in an e-mail. Your present callsign will be your "User Name."

Next, you will be asked to make up and enter a password. If only you use your own home computer, you don't need one, so you can leave that blank, but if you do enter one, be sure you don't lose it. If you forget it, you'll have to apply for a whole new certificate, so write it down and save it in at least two safe places. Even if you leave it blank, write yourself a note to remind you it's blank.

As this will be your first Callsign Certificate, your request must be "Unsigned". Finally, when asked whether to upload your request, select "Yes".

You will receive a message in the Status Log ending with "Your certificate request processing is completed."

The "TQSL CERT" status window should list your station under "tQSL Certificates." You will find a "Do Not Enter" symbol on your new line, meaning that your request has been entered, but not yet usable. You still have to wait for the e-mail that has your Callsign Certificate and a new 6-character password.

In a few days, you should receive a postcard in the mail from ARRL, with an 8-character password on the address side, above the first address line. Sign into the website shown on the other side of the card, and enter your callsign and that password, and click "Submit". That's the only time you should ever need that 8-character password.

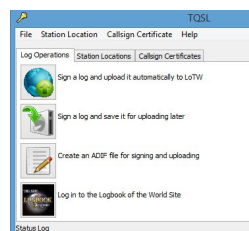
Your Callsign Certificate should arrive as an attachment to an e-mail within three business days, along with your new 6-character LoTW password.

When the e-mail arrives, with your Callsign Signature as an



attachment, be sure to save a disk copy of the Callsign Signature file in a safe place, and also the important 6-character LoTW password which you will find in the body of the e-mail.

So now you're now ready to use the TQSL menu to define your station location and load your QSO's into LoTW. (See "Help" for instructions and examples for defining your station location.)



To submit a log, it needs to be in the form of either an ADIF or Cabrillo file, but If you don't have one, click the "Create an ADIF file" icon of the TQSL menu, and you can easily make one. If your QSO date & time information is in Eastern Standard Time, you need to add 5 hours to convert it to UTC. (7:00pm EST starts the next UTC day.)

Also at the TQSL menu, click "Enter and sign a log." Find and click the new log file to open it. Click your station location, and click "OK."

Click "Yes" to confirm signing. Leave date range blank, and click "OK."

You should see a message at the bottom of the screen, indicating that the file is about to be processed.

Next time, entering QSO's should be easy.

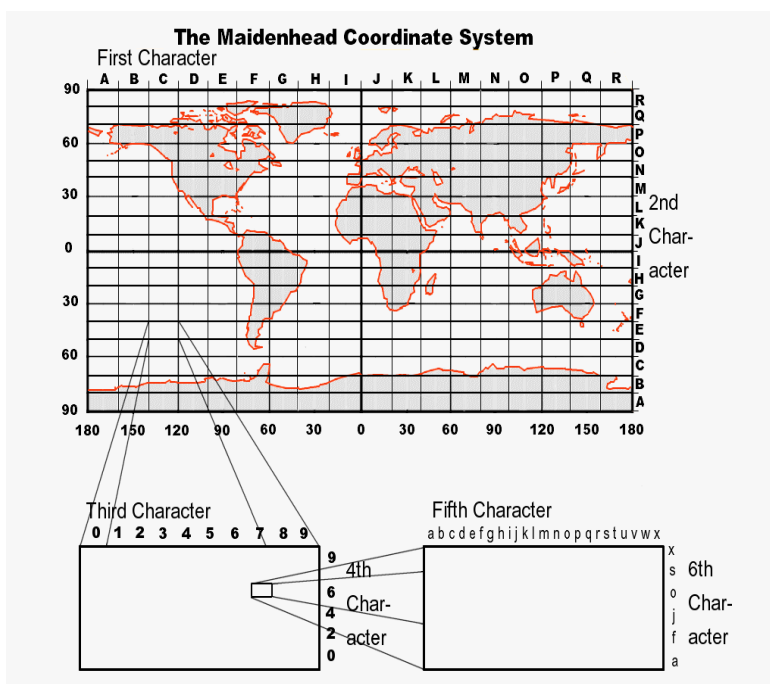
To view your QSOs, click the icon at the bottom of the LoTW menu, enter your username (callsign), and the 6-character password. You can also check to see if the logs of the stations you contacted match up with yours.

That's' done.

Some December Contests

Wake-Up! QRP Sprint	Dec 7 0600Z-0629Z, 0630Z-0659Z, 0700Z-0729Z & 0730Z-0800Z
Ten-Meter RTTY Contest	Dec 8 0000Z-2400Z
NAQCC Straight Key/Bug Sprint	Dec 11 0130Z-0330Z
ARRL 10-Meter Contest	Dec 14 0000Z - Dec 15 2400Z
Run for the Bacon QRP Contest	Dec 16 0200Z-0400Z
NAQCC Straight Key/Bug Sprint	Dec 18 0130Z-0330Z
ARRL Rookie Roundup, CW	Dec 22 1800Z-2359Z
Original QRP Contest	Dec 28 1500Z - Dec 29 1500Z

December DX Opportunities



Dates	Entity	Call	IOTA	ITU CQ	Bands&Modes	QSL via	Grid	QSL via
Nov29-Dec04	Fiji	3D2	OC-xxx	56 32	All C S R	Home Call	RH91	Home Call
Nov16-Dec15	Madagascar	5R8IC	AF-090	53 39	C	F6ICX	LH43	DXW.net
Nov18-Dec03	Togo	5V7TH	AF	46 35	40 30 20m S C R	ON6DX Direct	JJ06	ON6DX
Nov27-Dec02	Samoa	5W8A	OC-045	62 32	160-10m C	LotW	AH45	DXW.net
Nov29-Dec07	Senegal	6V7D	AF	46 35	40-10m C +S?	DL7VOA	IK14	DL7VOA
Dec08-Dec14	Senegal	6W	AF	46 35		AA1AC	IK14	OPDX
Dec22-Dec24	Lesotho	7P8CE	AF	57 38		DH3WO	KG40	DK1CE
Dec22-Dec24	Lesotho	7P8DJ	AF	57 38		DJ2HD	KG40	DJ2HD
Dec22-Dec24	Lesotho	7P8WO	AF	57 38		DH3WO	KG40	VA3RJ
Dec09-Dec16	Barbados	8P8, 8P9	NA	11 08		KI1U	GK03	KI1U
Dec06-Dec08	Bahamas	C6AKQ	NA	11 08	CQ 160m test	N4UM N4BP	FL15	N4BP
Dec07-Dec17	Niue	E6RQ	OC-040	62 32		VK4FI Direct	AH50	VK4WR
Nov26-Jan07	Canary Is	EA8	AF-004	36 33		Home Call	IL27	IK1PMR
Nov16-Dec06	St Barthelemy	FJ	NA-146	11 08	40-10m C R	DK7LX	FK87	DXW.net
Dec21-Jan10	Temotu	H40FN	OC-100	51 32		DK9FN	QI90	DXW.net
Dec01-Dec09	St Lucia	J6	NA-108	11 08	160-10m C S	LotW	FK93	N9AW
Oct21-Dec21	Dominica	J79	NA-101	11 08	160-10m C S P	HB9MFM	FK85	HB9MFM
Nov15-Dec01	St Vincent	J88HL	NA-109	11 08		OQRS	FK93	SP6EQZ
Dec01-Dec06	Papua New Guinea	P29VNX	OC-008	51 28	30-10m C	LotW	QI23	JA1NLX
Dec15-Jan15	Seychelles	S79ACR	AF-024	53 39		UA3DJY	LI55	DXW.net
Nov28-Dec04	West Kiribati	T30	OC	65 31	40-10m C S R P	JARL/Direct	RJ62	JF1CCH
Dec04-Dec11	East Kiribati	T32RC	OC	6x 31	160-10m C S R	N7RO	RJ11	OPDX
Nov28-Dec03	East Kiribati	T32TM	OC-024	6x 31		K8NA	RJ11	DXW.net
Sep28-Dec02	Afghanistan	T6RH	AS	40 21	20-6m	NI5DX	MM44	N3HU
Nov18-Dec01	Guadeloupe	TO0MT	NA-102	11 08		LotW	FK96	FG4KI
Nov20-Dec03	Benin	TY1	AF	46 35	40-6m C S R	ON6DX Direct	JJ17	ON6DX
Nov21-Dec01	Antigua	V25A	NA-100	11 08	160-10m C S	KG2A Direct	FK97	JJ1RJR
Dec14-Jan18	Namibia	V5	AF	57 38	10m SSB	DJ2HD	JG87	DJ2HD
Dec24-Jan08	Namibia	V5	AF	57 38		DL3DXX	JG87	DJ2HD
Dec31-Jan06	Namibia	V5	AF	57 38		DH3WO	JG87	DH3WO
Nov07-Dec04	Namibia	V5t	AF	57 38	160-10m C D	DJ4SO	JG87	425DXN
Dec04-Dec12	Micronesia	V63XG	OC-110	65 27	160-10m C S R	JA1XGI	QJ96	DXW.net
Nov20-Dec10	Laccadive Is	VU7AG	AS-011	41 22	160-10m C S R	LotW	MK60	DXW.net
Nov29-Dec14	Vietnam	XV2LRR	AS	49 26	40-10m C S	LotW	OK30	SM6LRR
Nov23-Dec08	Vietnam	XV2RZ	AS	49 26	20-6m C S	OH4MDY Dir	OK30	DXW.net
Dec01-Dec08	Cayman Is	ZF2OK	NA-016	11 08		N0OK	EK99	DXW.net

Ocean County ARES® News

December, 2013

Ocean County ARES® News – December, 2013

The next meeting of Ocean County ARES will be on December 18th, 2013 at 7:00 PM at the Ocean County EOC. There will be a short presentation followed by the annual Holiday Party. Please try and attend and wish all your fellow operators a happy holiday season in person.

I would like to thank Jim, W2YG, for his assistance with the Harvey Cedars D-Star Gateway. When the 70 cm repeater is placed into operation, it will be connected to other D-Star repeaters world-wide via the Internet through a Gateway computer. There was no funding approved for this computer and Jim volunteered to build a rack mount PC with his own funds. Furthermore, he investigated all the required Linux software required by Icom to properly make the Gateway operate and procured and installed the required software. This was a tremendous amount of work and resources and we all owe Jim a Job Well Done!

I was recently contacted by Southern Ocean Medical Center regarding the use of the Amateur Radio communications units positioned there and would like to share a lesson learned with all of you. The Center was supposed to participate in a communications drill on November 19th with other hospitals. The particulars, such as frequency, PL, etc. was not known until the day of the drill, but about a week prior to the drill, one of the units was tested to ensure it worked. The test was conducted by a licensed operator and was overseen by Security personnel and Supervision. Twice the radio was keyed and the power supply shutdown. I was called in to investigate.

To make a long story short, the operator had positioned the portable mag mount antenna near the communications unit and when the radio was keyed to transmit, RF energy apparently was coupled into the power supply and caused it into a protective shutdown. The power supply is an Astron SS-18, switching type power supply. The entire unit was tested on an HP Service Monitor and was found to be perfectly operable using a dummy load or outdoor antenna.

The lesson learned is that portable mag mount antennas are designed to be placed in the middle of an automobile roof. If you need to use one inside for an emergency, try and locate it as far away from the radio and power supply as possible. Also, try and attach the magnetic mount to a metal surface, such as a file

cabinet located near a window. When not properly oriented, a mag mount antenna will have very high SWR and can damage the radio and can easily inject RF into any of the power supply or radio circuits.

I've always encouraged the hospitals in Ocean County to consider installing dual-band outdoor antennas for use with Amateur Radio. During the December 19th drill, it was learned that the repeater that was to be used was located in Monmouth County and there was no way that a mag mount antenna would have ever worked. Let's hope that hospital management learned a lesson from this drill and will now seriously consider the installation of a roof mount antenna.

Hurricane season is over the end of November, so it looks like all the projections for above average activity was about as accurate as the Farmers Almanac. With the exception of the Philippines, we dodged another bullet.

73 de WX2NJ
Bob Murdock

Skyhook's 2013 Elmer Index

January	Can I work DX with an indoor antenna?
February	What's my grid square? [also see April and September issues]
March	Where can I get a list of local repeaters? [also see June issue]
April	Why is SWR important?
June	I have a very high SWR-- what's wrong?
October	What is Q?
November	What's all this stuff about the F-layer?
December	Are tubes really better than semiconductors?

Skyhook's Band Plan Index

January	10m
February	12m, 15m & 17m
March	20m
April	30m & 40m
May	60m & 80m
June	160m
July	6m
August	2m
September	1.25m
October	70cm